



LE LYRIAL

PROTRAVEL INTERNATIONAL

08/05-08/12 2022
Venice - Venice
8 DAYS, 7 NIGHTS

PUBLIC AREAS

LOBBY

1 453 sq.ft / 135 sq.m Concierge lounge including reception, customer relations and excursions desk, concierge service

RESTAURANTS

• Gastronomic Restaurant

3 982 sq.ft / 370 sq.m

Capacity: 268

Elegant main dining room for breakfast, lunch and dinner serving French and international cuisine, fine wine cellar

• Grill Restaurant

2 530 sq.ft / 235 sq.m

Inside capacity: 150

Outside capacity: 60

Casual eating venue for breakfast, buffet lunch and themed dinner

LOUNGES

• Main Lounge

2 745 sq.ft / 255 sq.m

Inside capacity: 110

Outside capacity: 30

Afternoon tea, lounge, live music, dance floor and cocktail bar

Access to the outside terrace

• Panoramic Lounge

1 184 sq.ft / 110 sq.m

Library, internet desk, cocktail bar, live entertainment on selected evenings

Direct access to the panoramic terrace

• Open-air Bar (Pool deck)

Seating: 50

Overlooking the pool deck

RECREATION / RELAXATION

• Theatre

2 690 sq.ft / 250 sq.m

Capacity: 250

Main show room for conferences and live entertainment on selected evenings

State-of-the-art audio and video technology

• Fitness & Beauty Corner

Fitness room: Kinesis equipment, running machines, bicycles...

Beauty Corner Sothys™: Hairdresser,

Massage rooms (2), Balneo room, Hammam,

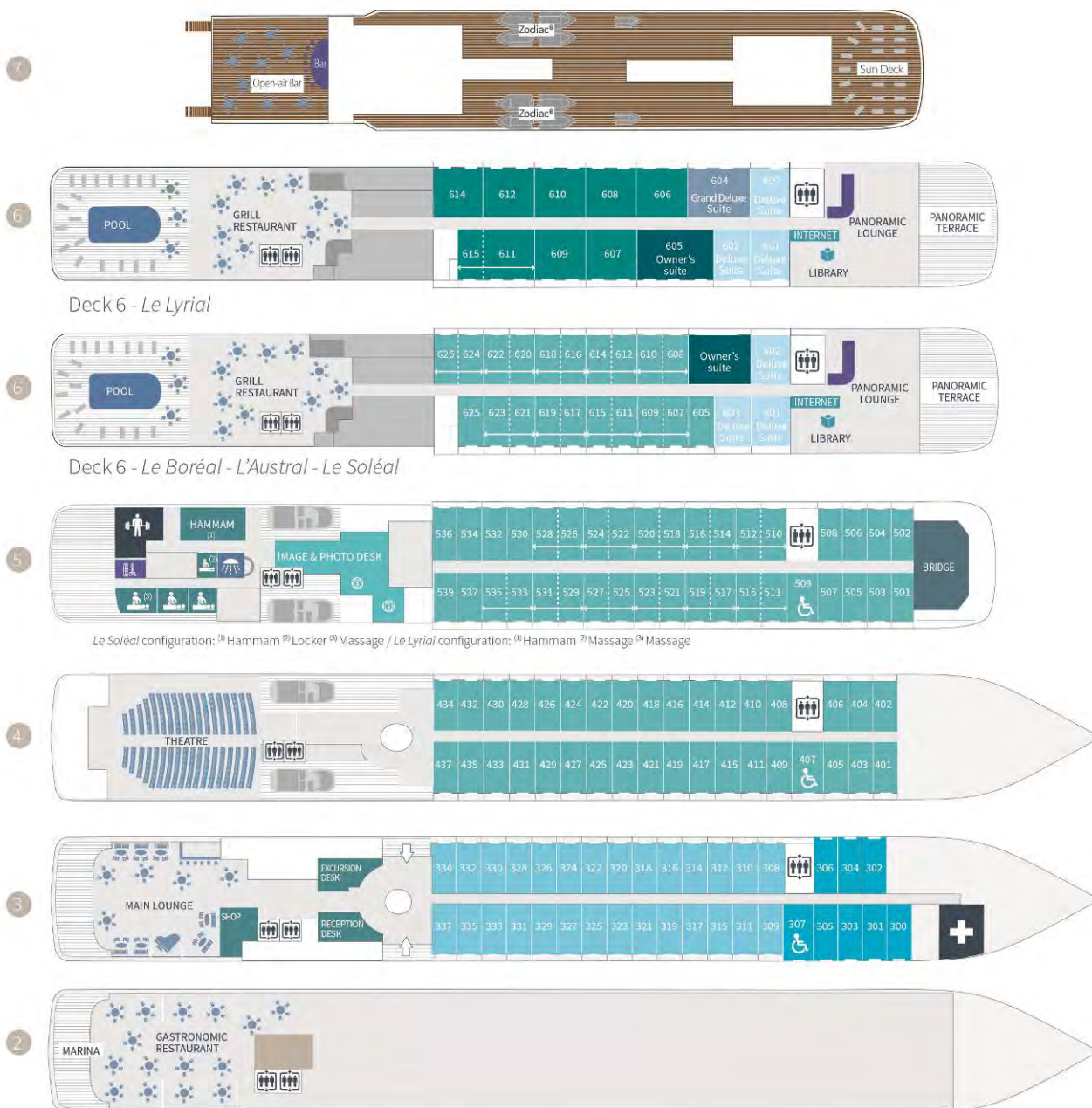
Relaxation room

• Leisure area

Wii™ area, photoshop



DECK PLAN



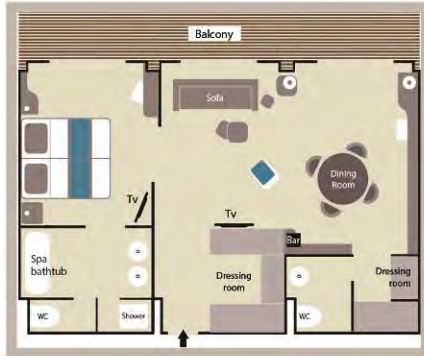
- 2 Gastronomic Restaurant - Marina
- 3 28 Deluxe Staterooms with private balcony
8 Superior Staterooms (Staterooms 300 & 301 have a porthole) - Main Lounge - Shop - Reception desk - Excursion desk - Medical centre
- 4 35 Prestige Staterooms with private balcony Theatre
- 5 37 Prestige Staterooms with private balcony (with 22 Prestige Staterooms convertible into 11 Prestige Suites) - Fitness - Beauty Corner Sothys™ - Balneo, Hammam, Massage, Hairdresser - Relaxation room - Image & photo desk - Bridge
- 6 **Le Boréal, L'Austral, Le Soléal:** Owner's Suite - 3 Deluxe Suites with private balcony - 20 Prestige Staterooms with private balcony (with 18 Prestige Staterooms convertible into 9 Prestige Suites) - **Le Lyréal:** Owner's Suite 1 Grand Privilege Suite - 3 Deluxe Suites with private balcony - 1 Grand Deluxe Suite - 8 Privilege Suites - 1 Prestige Stateroom - Pool - Grill Restaurant - Internet space - Library - Panoramic lounge - Panoramic terrace
- 7 Open-air bar - Sun deck

Owner's Suite Deck 6	Prestige Suites Deck 6 - 5 (except <i>Le Lyréal</i>)	Prestige Staterooms Deck 4 - 5 - 6
Privilege Suites Deck 6 - <i>Le Lyréal</i>	Grand Deluxe Suite Deck 6 - <i>Le Lyréal</i>	Deluxe Staterooms Deck 3
Grand Privilege Suite Deck 6 - <i>Le Lyréal</i>	Deluxe Suites Deck 6	Superior Staterooms Deck 3

ACCOMODATION

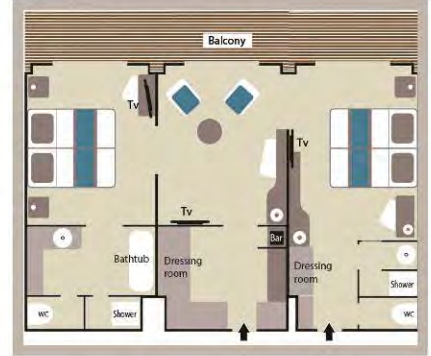
OWNER'S SUITE

54 sq.m + 12 sq.m. private balcony / 581 sq.ft + 129 sq.ft. private balcony



GRAND PRIVILEGE SUITE

54 sq.m + 12 sq.m. private balcony / 581 sq.ft + 129 sq.ft. private balcony



GRAND DELUXE SUITE

45 sq.m + 10 sq.m. private balcony / 484 sq.ft + 108 sq.ft. private balcony



8 PRIVILEGE SUITES

36 sq.m + 8 sq.m. private balcony / 388 sq.ft. + 86 sq.ft. private balcony

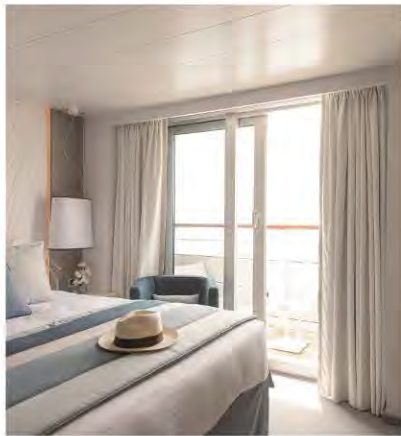
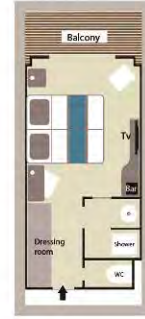
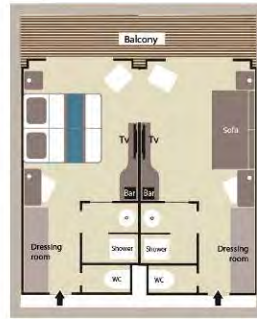


73 PRESTIGE STATEROOMS

18 sq.m. + 4 sq.m. private balcony / 194 sq.ft. + 43 sq.ft. private balcony)

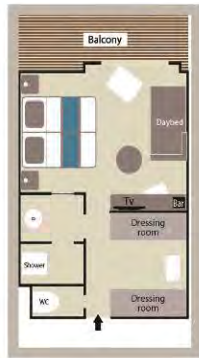
11 PRESTIGE SUITES

36 sq.m. + 8 sq.m. private balcony / 388 sq.ft. + 86 sq.ft. private balcony



3 DELUXE SUITES

27 sq.m. + 6 sq.m. private balcony / 291 sq.ft. + 65 sq.ft. private balcony



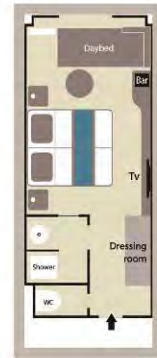
28 DELUXE STATEROOMS

18 sq.m. + 4 sq.m. private balcony / 194 sq.ft. + 43 sq.ft. private balcony



8 SUPERIOR STATEROOMS

21 sq.m. / 226 sq.ft



PAYMENT SCHEDULE & CANCELLATION POLICY

Days prior departure	Payment Schedule	Attrition description & Fees
Between Signature to 301 days prior		Free release
300 days to 241 days prior	15% deposit 300 days prior departure	15% penalty
240 to 181 days prior	10% deposit 240 days prior departure	25% penalty
180 days to 91days prior	25% deposit 180 days prior departure	50% penalty
90 days to 61 days prior	Balance due 90 days prior departure	75% penalty
Less than 60 days prior		100% penalty